

**SUBJECT : OMNISTAR FIRMWARE UPGRADE**

**APPLICATION : 3500 SERIES**

**DESCRIPTION : IDENTIFYING THE FIRMWARE VERSION**

**PROCEDURE : 3500 – 3500LR12 - 3510**

OmniSTAR requires your firmware on your GPS receiver to be upgraded, in order to maintain a high standard of service from your GPS receiver. (Please note this procedure is different from the Frequency Changeover to OCSAT).

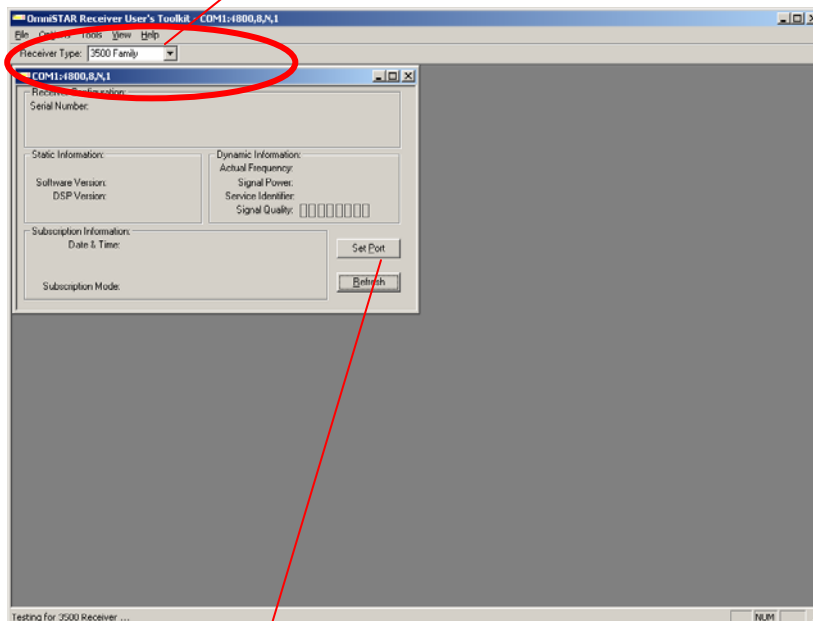
These are the procedures to follow for checking your firmware on the 3500 – 3500LR12 and 3510.

Connect the power cable to the 3500 series receiver.

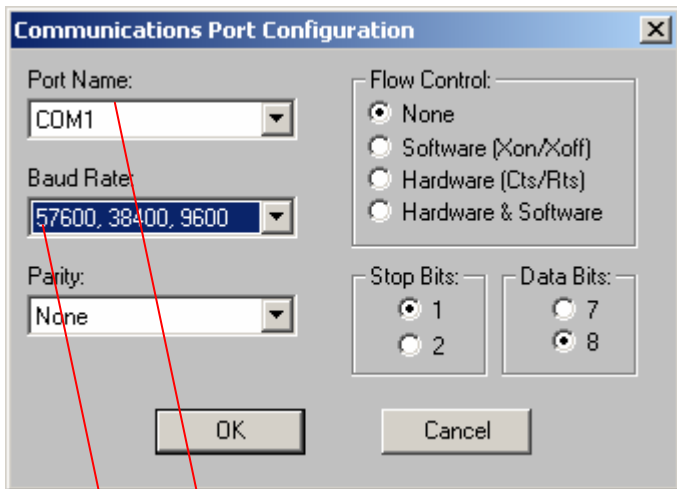
Connect the data cable between the **COMMAND** port and a **COM PORT** on the computer that the **TOOLKIT** will run on.

Open OmniSTAR Receiver User's Toolkit.

Set Receiver type to 3500 Family.



Press the **SET PORT** button and the Communications Port Configuration panel will appear.



Set the **PORT NAME** to suit the COM Port you have connected the 3500 series receiver to on your computer.

Set the **BAUD RATE** to 57600, 38400,9600. This will allow the toolkit to search to find the correct baud rate.

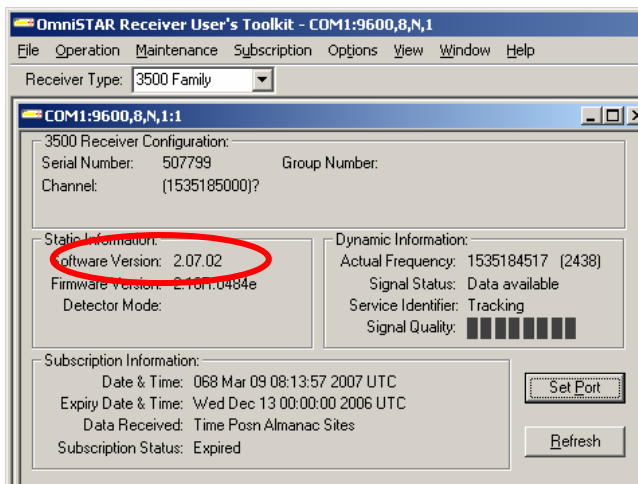
Ensure other settings are configured as per the example above.

Then Press **OK**.

The receiver information will fill the screen as below when the program is communicating with the receiver. If the screen doesn't fill with this information:

Click on **SET PORT**.

Change the **BAUD RATE** to 19200 and click **OK** again.





The **SOFTWARE VERSION** should be 2.06.05 or above.

Once finished with **TOOLKIT**. Simply close the Toolkit program down.

Remove the data cable from the **COMMAND** port on the receiver and re-connect it to the Data Port.

**Please contact OmniSTAR on 1300 794 498 if you have any problems between business hours.**