



**SUBJECT : OmniSTAR FIRMWARE UPGRADE**

**APPLICATION : COMPUTRONICS**

**DESCRIPTION : IDENTIFYING THE FIRMWARE VERSION**

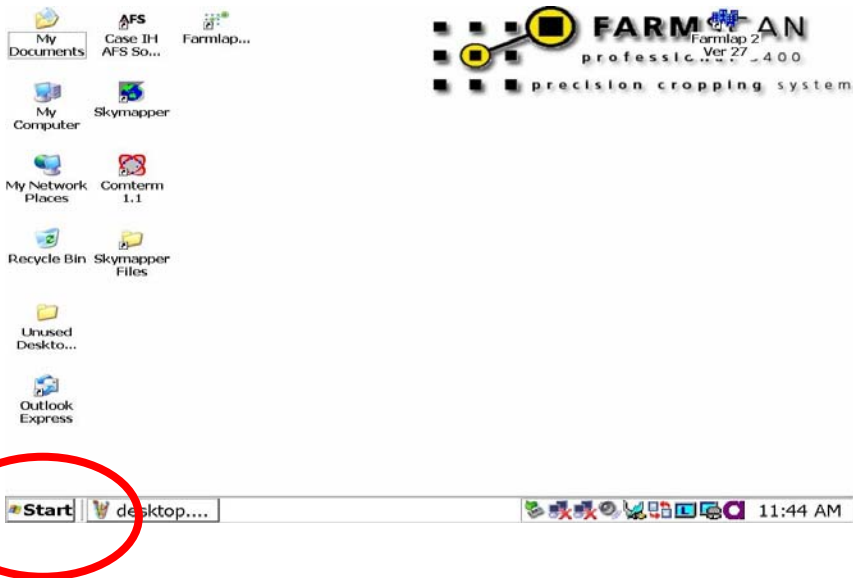
**PROCEDURE : NOVATEL**

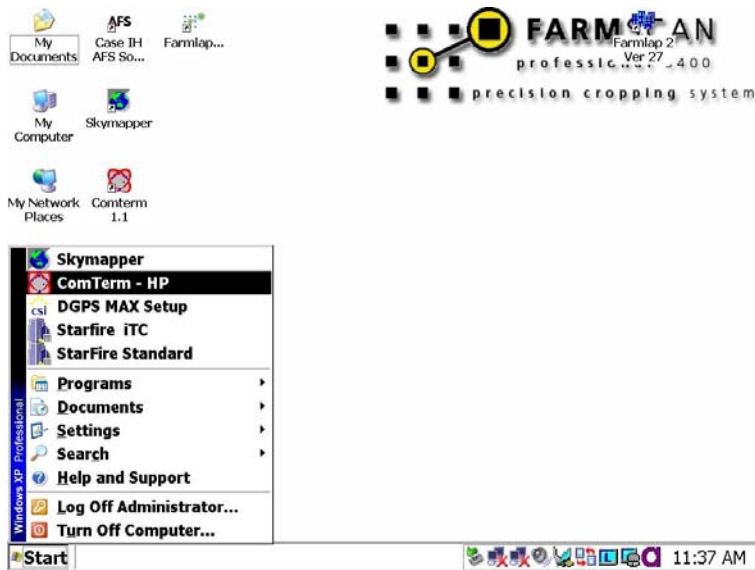
OmniSTAR requires your firmware on your GPS receiver to be upgraded, in order to maintain a high standard of service from your GPS receiver. (Please note this procedure is different from the Frequency Changeover to OCSAT).

**COMPUTRONICS** - These are the procedures to follow for checking your firmware on a Novatel GPS receiver.

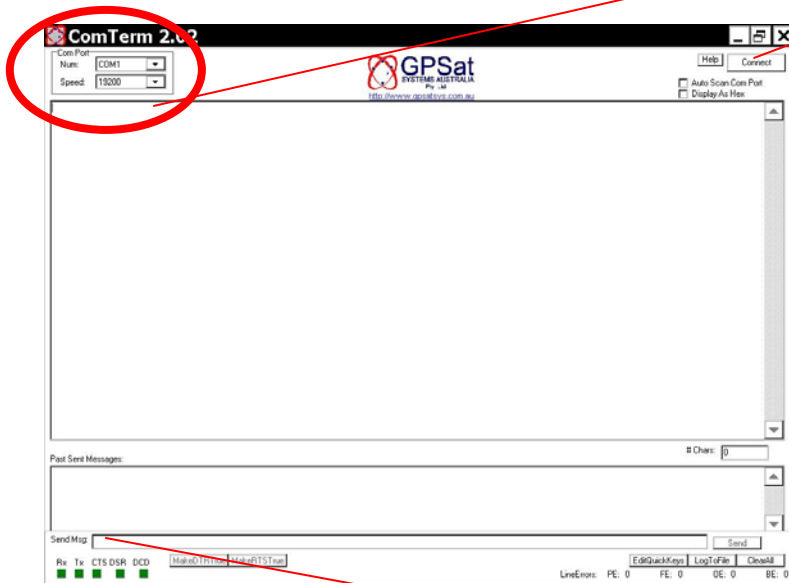
**Novatel: Procedure to check firmware version**

1. Turn receiver on.
2. Plug data cable into the **BLACK** port of the receiver and the other end into the serial port of the computer.
3. Start **COMTERM**.

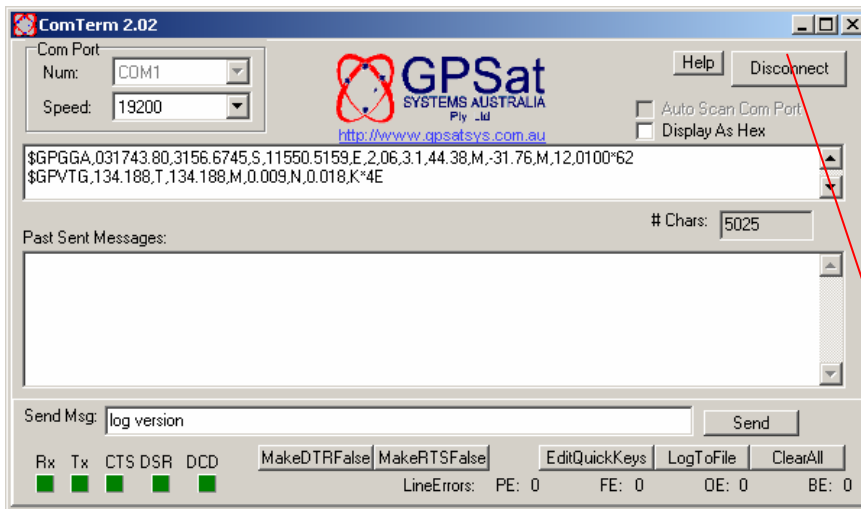




4. Set communication parameters at **Speed 19200 baud**, then **PRESS CONNECT**.



5. Type in the following command, **log version** in the “**Send Msg**” text box.



6. Position the mouse arrow on the disconnect button. **DO NOT PRESS YET.**



7. Press the **ENTER** key on the keyboard and wait 3 seconds before pressing disconnect.
8. Use the scroll up arrow to change the display to reach the command reply line.
9. The screen will display a line similar to the following:

```
[COM1]<VERSION COM1 0 62.0 FINESTEERING 1402 279636 337 00000020 3681 2177< 4
< GPSCARD "WAASHPB" "SAS04279045" "LBg2-3.04 Y2T" "2.312" "2.100" "2005
/Dec/ 7" "15:14:13"
< DB_OMNISTARXILINX "OmniXilinx" "0" "" "103" "" "2002/Jul/26" "08:56:52"
< DB_OMNISTARDSP "OmniDSP" "0" "" "1.102" "" "2006/Jun/21" "13:25:47"
< IBOARD "OMNISTAR" "A69E5FD1" "6.03-103" "1.102" "750718" "" ""
```

Note: the numbers in **BOLD** as shown above.

The firmware version should be greater than 2.302.



The DSP version should be greater than 1.004 or 1.102 and above.

**Please contact OmniSTAR on 1300 794 498 if you have any problems between business hours.**