



SUBJECT : OmniSTAR FIRMWARE UPGRADE

APPLICATION : COMPUTRONICS

DESCRIPTION : IDENTIFYING THE FIRMWARE VERSION

PROCEDURE : TOPCON

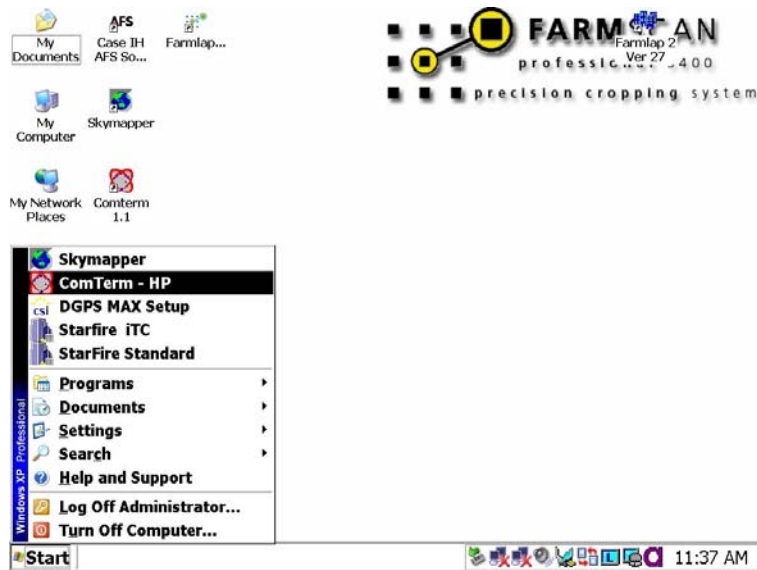
OmniSTAR requires your firmware on your GPS receiver to be upgraded, in order to maintain a high standard of service from your GPS receiver. (Please note this procedure is different from the Frequency Changeover to OCSAT).

COMPUTRONICS - These are the procedures to follow for checking your firmware on a Topcon GPS receiver.

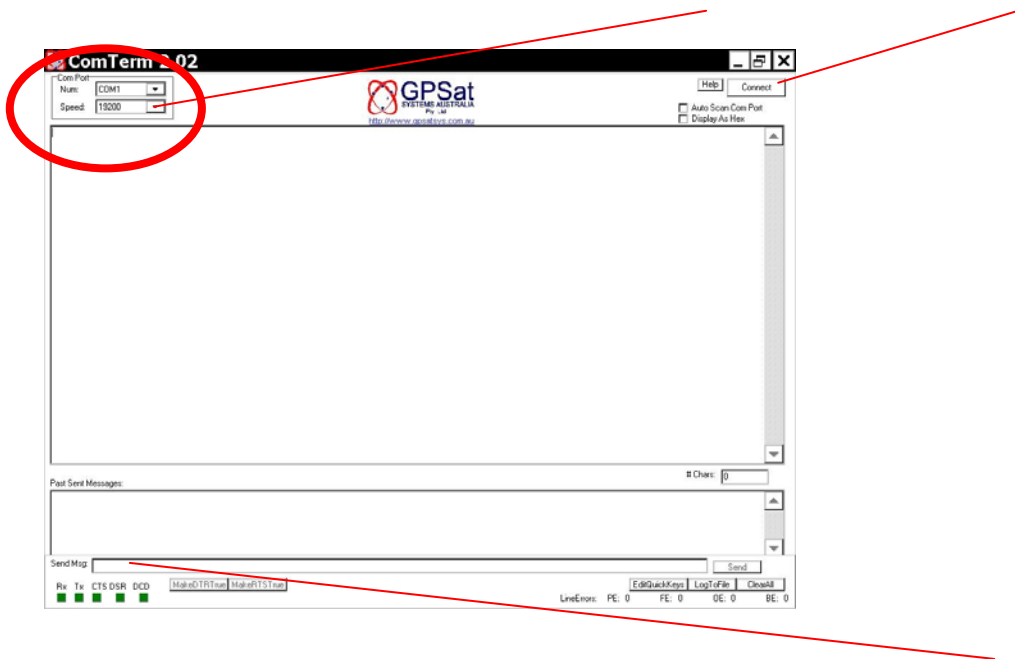
Topcon MapHP: Procedure to check firmware version

1. Turn receiver on.
2. Plug data cable into the HP port and the other end into the serial port of your computer.
3. Start **COMTERM**.

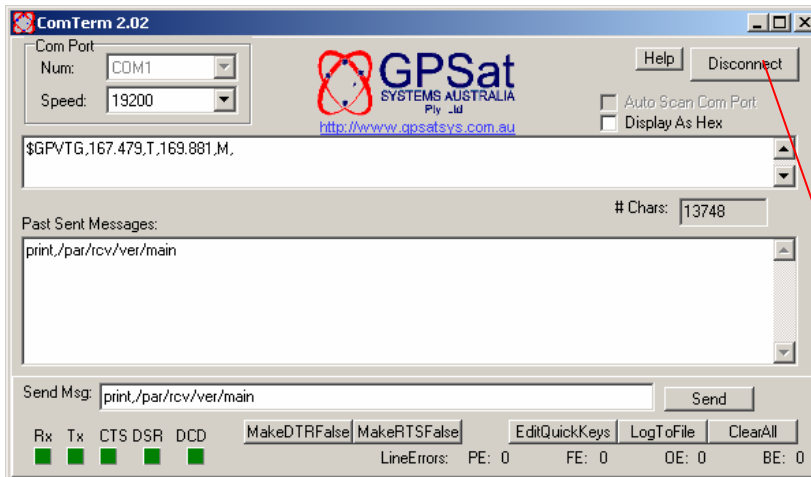




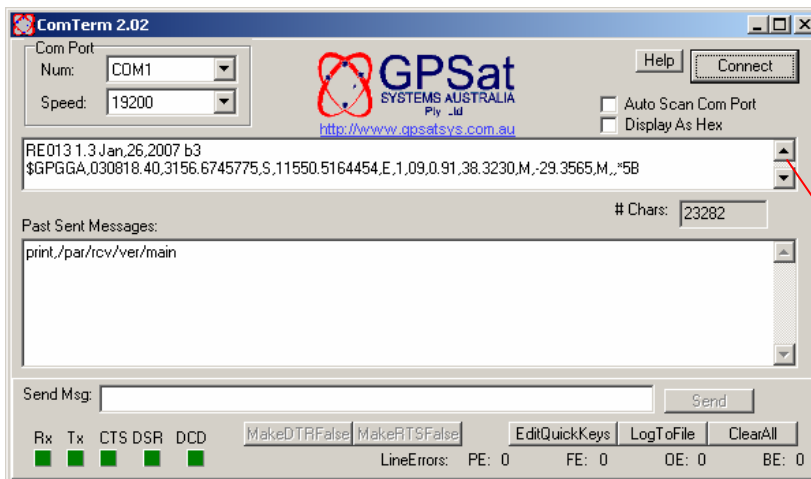
4. Set communication parameters at **Speed 19200 baud**, then **PRESS CONNECT**.



5. Type in the following command, **print,/par/rcv/ver/main** in the “**Send Msg**” text box.



6. Position the mouse arrow on the disconnect button. **DO NOT PRESS YET.**
7. Press the **ENTER** key on the keyboard and wait 3 seconds before pressing disconnect.



8. Use the scroll up arrow to change the display to reach the command reply line.
9. The screen will display a line similar to the following **RE013 1.2 Sep,12,2006 p0.**
NOTE THIS NUMBER.
10. The current firmware version from the HP Port should be greater than 1.2.

Please contact OmniSTAR on 1300 794 498 if you have any problems between business hours.