



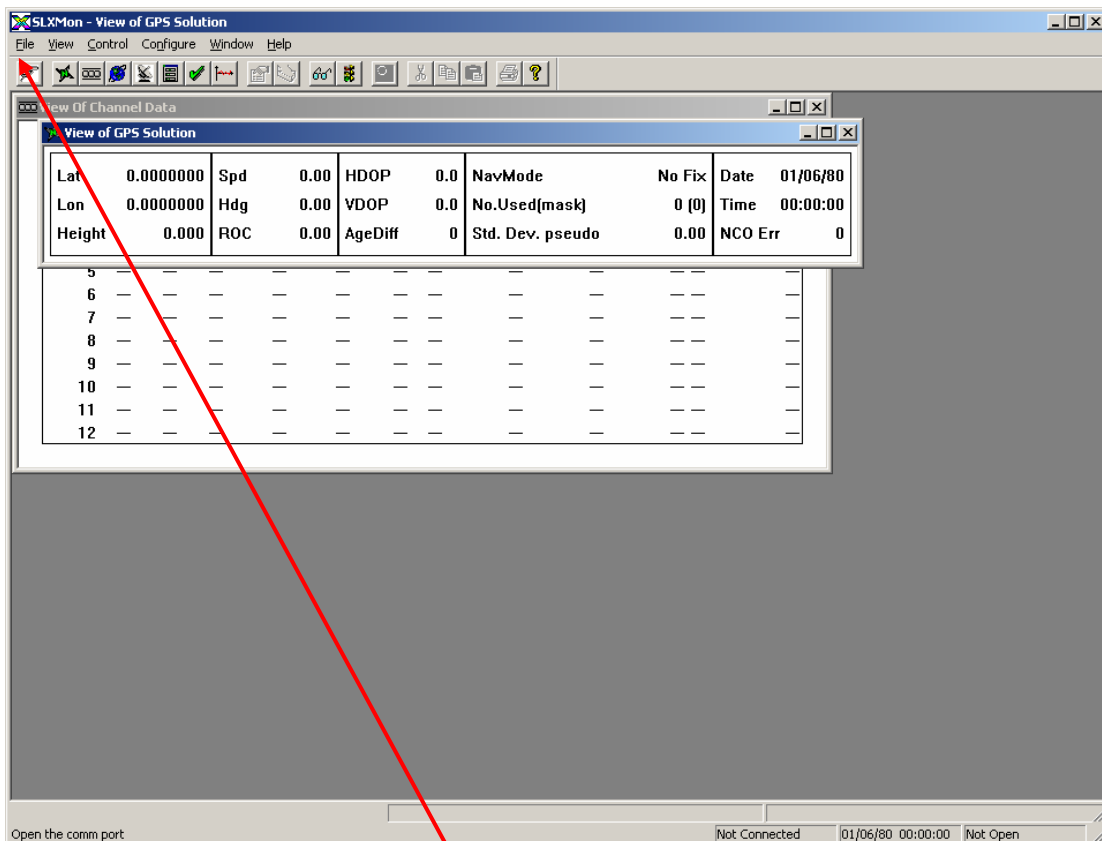
SUBJECT : OmniSTAR FIRMWARE UPGRADE
APPLICATION : CSI SATLOC SLXg & SLXg3
DESCRIPTION : IDENTIFYING THE FIRMWARE VERSION
PROCEDURE : CSI SATLOC SLXg & SLXg3

OmniSTAR requires your firmware on your GPS receiver to be upgraded, in order to maintain a high standard of service from your GPS receiver. (Please note this procedure is different from the Frequency Changeover to OCSAT).

These are the procedures for checking the firmware in a CSI SATLOC SLXg and SLXg3 receivers with no LCD display.

Connect the receiver to a suitable power supply and connect port A to a PC.

Start **SLXM** on software.



Press the **OPEN CONNECTION** button.

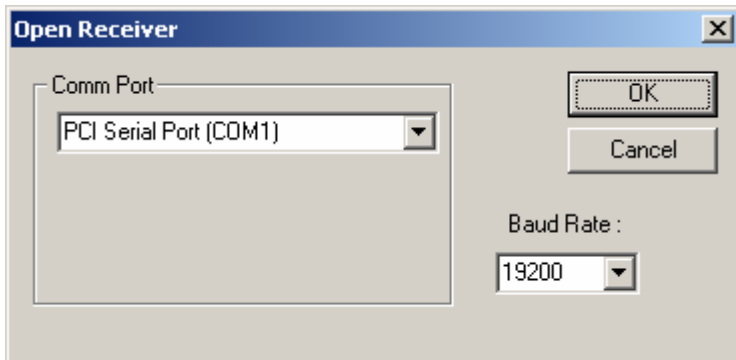
The **OPEN RECEIVER** box will appear.



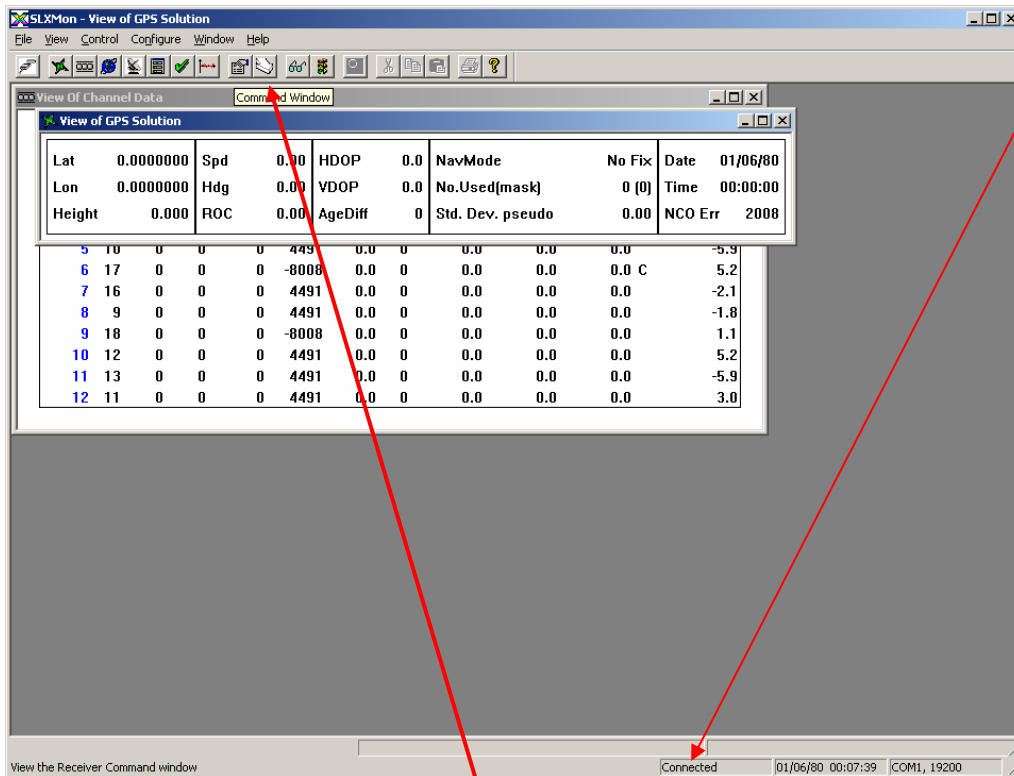
Set the **COM PORT** to match the port on your PC which you have connected the receiver to.

Set the **BAUD RATE** to 19200. You may need to try several different baud rates if 19200 does not work.

Press **OK**.

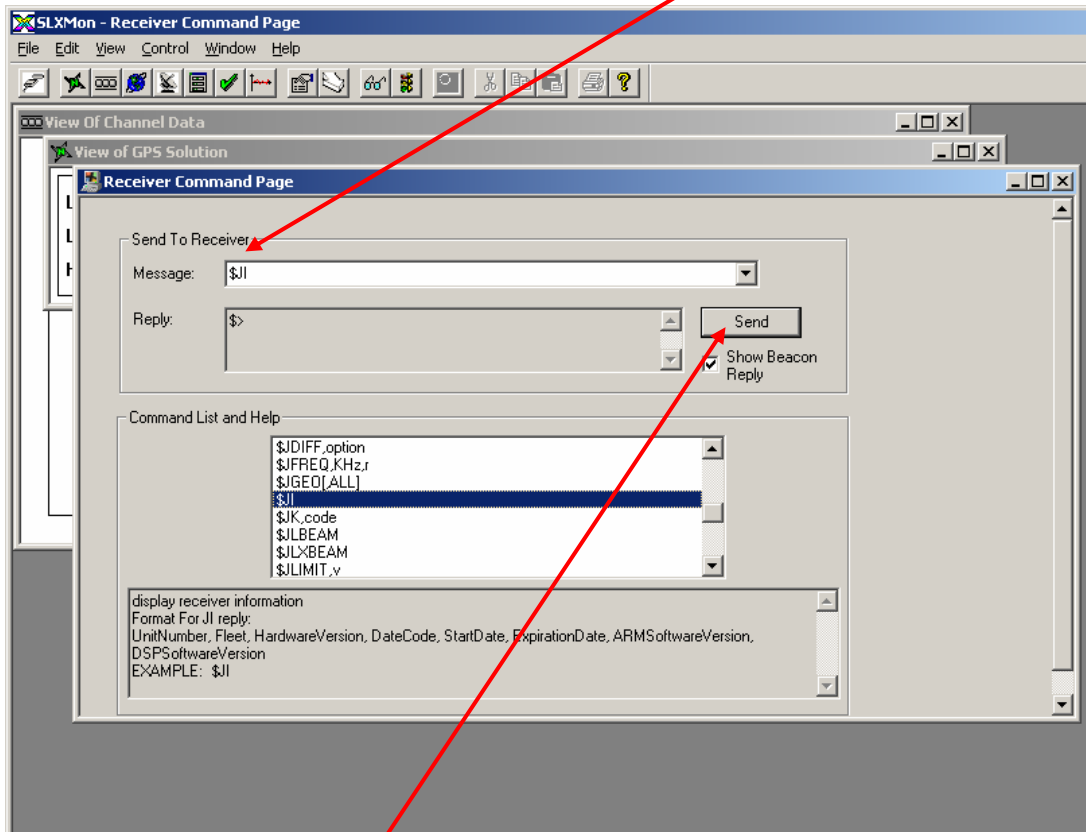


Once communications between the SLXmon software and the receiver has been established, information will begin to appear in the **VIEW OF CHANNEL DATA** window and **CONNECTED** will appear.

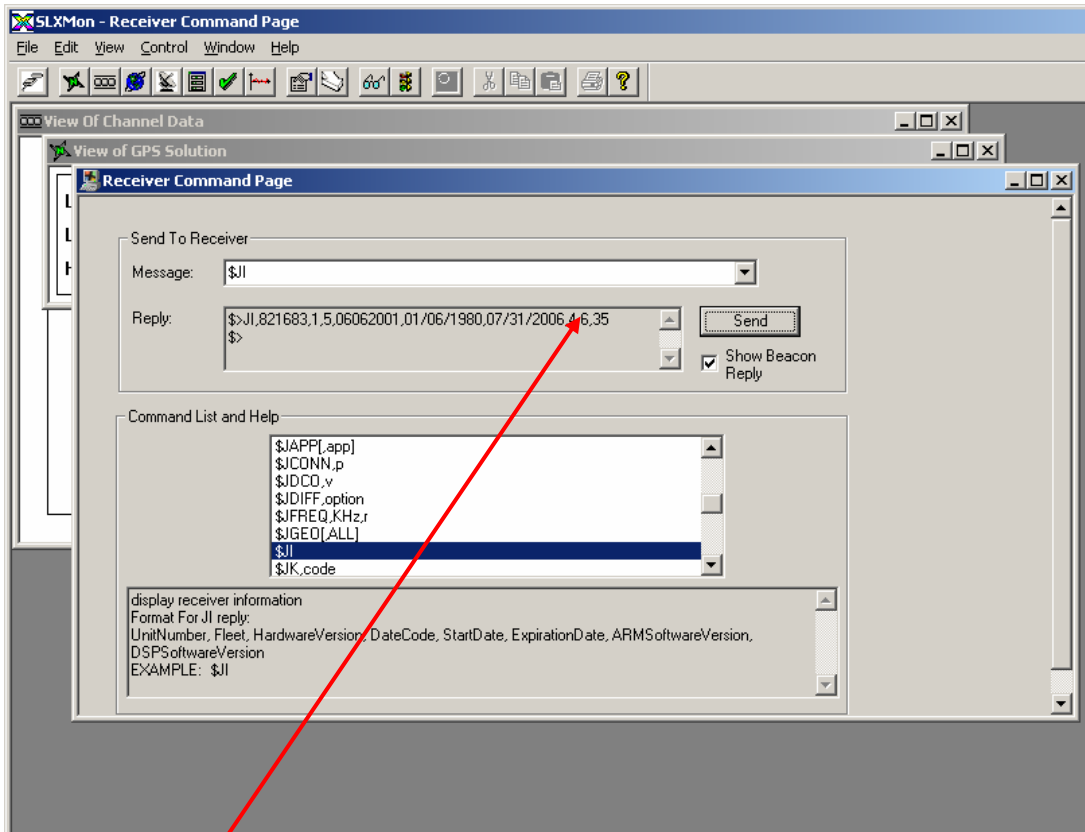


Press the **COMMAND WINDOW** button.

From the **COMMAND LIST** select the \$JI command and double click on it.
This will cause the \$JI command to appear in the **MESSAGE** line.



Then press the **SEND** button.



The **REPLY** line will contain the firmware version currently installed in the unit.
The second last comma separated field shows the firmware .

\$>JI,821683,1,5,06062001,01/06/1980,07/31/2006,4.8,35

Firmware version 4.8 or above is the required version.

Please contact OmniSTAR on 1300 794 498 if you have any problems between business hours.