



SUBJECT : OmniSTAR FIRMWARE UPGRADE

APPLICATION : RINEX

DESCRIPTION : IDENTIFYING THE FIRMWARE VERSION

**PROCEDURE : TITAN USING VIEW 3200 OmniLite 132
TRIMBLE AG 114/132/252 & 332**

OmniSTAR requires your firmware on your GPS receiver to be upgraded, in order to maintain a high standard of service from your GPS receiver. (Please note this procedure is different from the Frequency Changeover to OCSAT).

RINEX – These are the procedures to follow for checking your firmware on RINEX GPS receivers.

NOTE: THIS PROCEDURE DOES NOT APPLY TO YIELD MONITORS OR RECEIVERS THAT ARE CANBUS ENABLED

Checking firmware version on Trimble GPS receivers using toolkit.

The Toolkit application can be used to check the Trimble receiver serial number, subscription expiration date, firmware version and set current frequency to OCSAT 1535.185

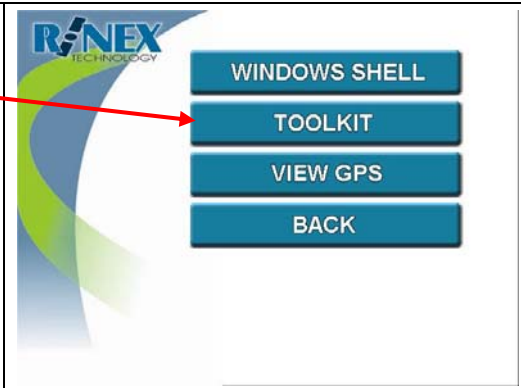
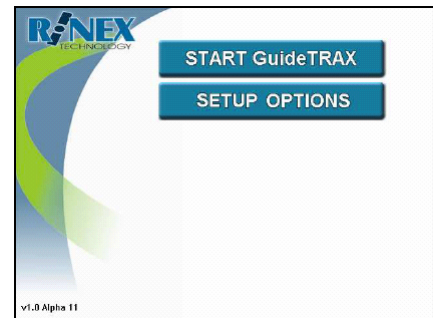
NOTE: Prior to continuing with this procedure, make sure you have installed the toolkit application in your System (refer to Rinex Support Documentation 6-1222 Installing Software on XP Embedded OS). This procedure is only applicable if you are running Windows XP operating system, have a Trimble receiver and have a valid subscription with OmniSTAR. The toolkit application will set the current connected Port to TSIP IN and NMEA OUT (19k2,8,N,1).


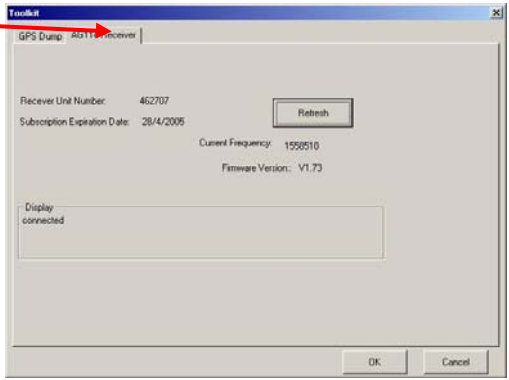

BEFORE YOU BEGIN:

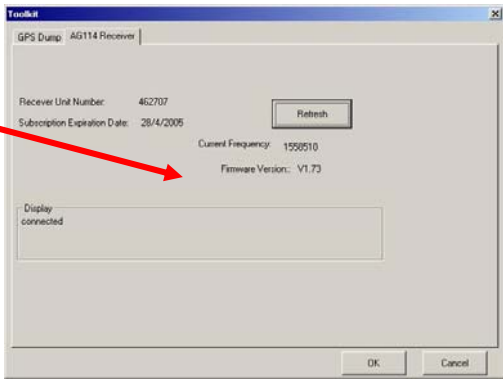
The OmniLite 132 or the Trimble AgGPS Model 114, 132, 252 or 332 receiver must be connected to the System and power ON.

INSTRUCTIONS:

1.	Turn the vehicle ignition OFF .
2.	Turn the power switch on the H Interface Control Unit OFF .
3.	Turn the vehicle ignition ON .
4.	After the vehicle has started, turn the power switch on the H Interface Unit ON .
5.	If this is a Saturn G system: Hold the shift key on the left hand side of the keyboard down until the screen in Step 1.6 is displayed.
6.	The Saturn HT system will now start up displaying the Launcher screen.
7.	Touch SETUP OPTIONS .
8.	Touch UTILITIES . A screen will be displayed asking for a password. Type in 123 using the on-screen keyboard and touch OK .
9.	Touch GPS UTILITIES .
10.	Touch TOOLKIT .



<p>11.</p>	<p>Program version should be Toolkit a20.</p> <p>If the version is not “a20”, then contact RINEX Technology Customer Support for software upgrade options.</p>	
<p>12.</p>	<p>Touch on the AG114 Receiver tab.</p>	
<p>13.</p>	<p>If the Toolkit application fails to connect to the receiver the following error message will appear.</p> <p>“Failed to read the serial number or the expiry date. Make sure you have the Ag114 connected before pressing Refresh”.</p> <p>Ensure that the receiver is connected and is powered ON and then touch OK.</p> <p>Touch Refresh button to re-connect.</p>	

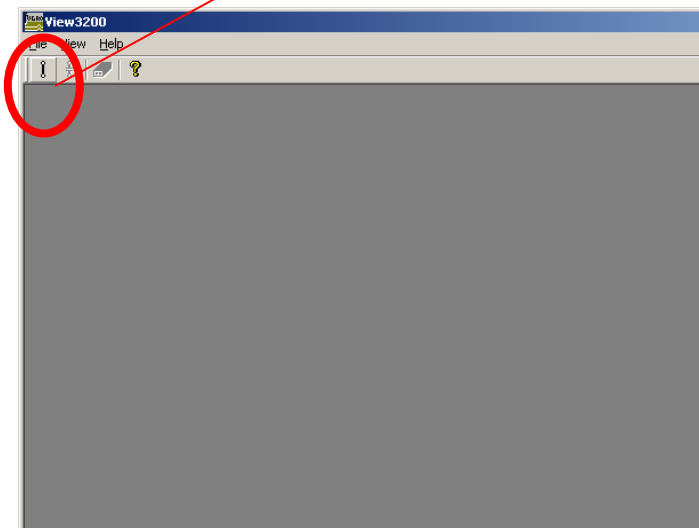
14.	<p>The Firmware Version should be displayed.</p> <p><u>The Firmware version should be V3.00.</u></p> <p>If not your GPS receiver requires a firmware upgrade. Therefore please contact RINEX TECHNOLOGY on (08) 9474 4771 for further instructions.</p>	
15.	Touch OK , then BACK and BACK again.	
16.	<p>Touch START GuideTRAX or START FarmTRAX.</p> <p>After GuideTRAX or FarmTRAX has started, the GPS Status icon should be scrolling in the bottom right corner of the screen.</p>	

To determine firmware version of a Rinex Titan (Casio PDA) go to:

Connect the data cable between **PORT A** of the OmniLite and the **PDA**.

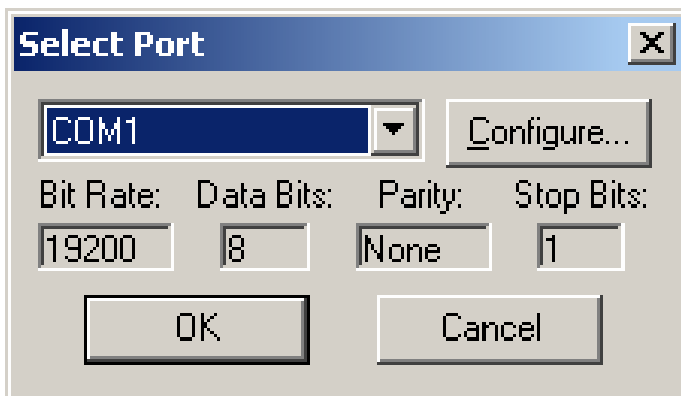
Start / Programs / USER3200.

Click on the **CONNECT** icon.



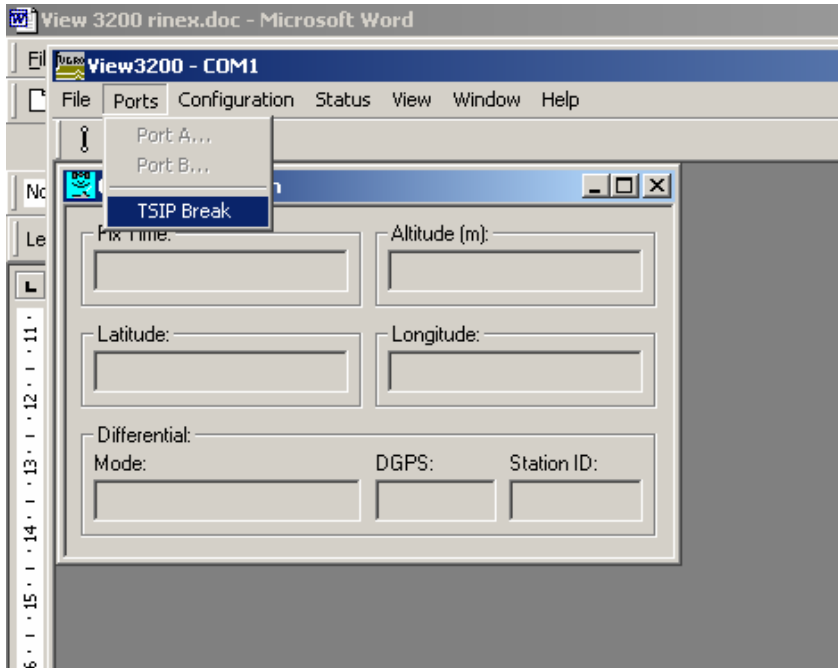
Set the **COMs** parameters as below. 19200 8 None 1. If you need to change the parameters click the **CONFIGURE** button.

Then press **OK**.

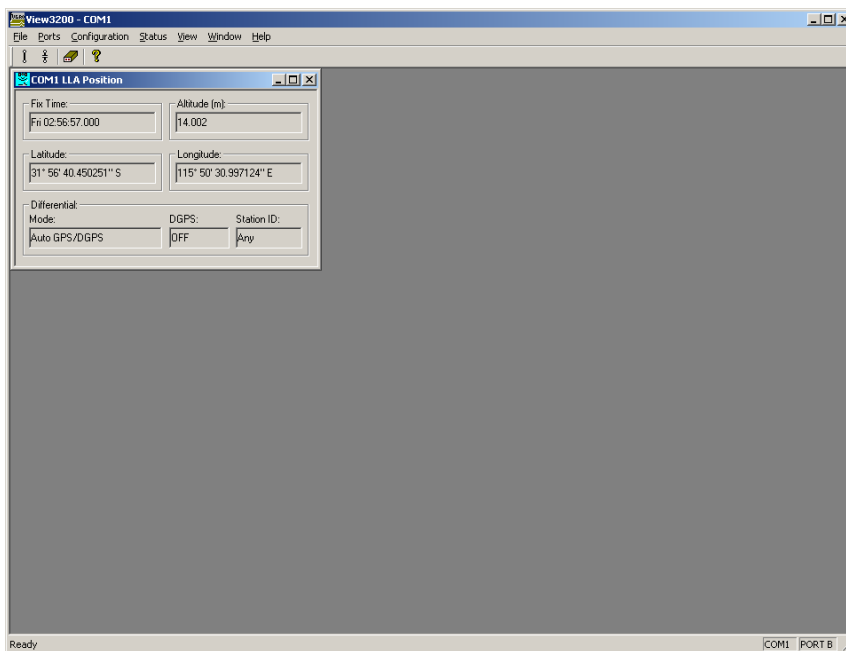


Select **PORTS**.

Then **TSIP BREAK**. This will force the communication parameters to a known value and allow the DGPS to talk to **View 3200**.

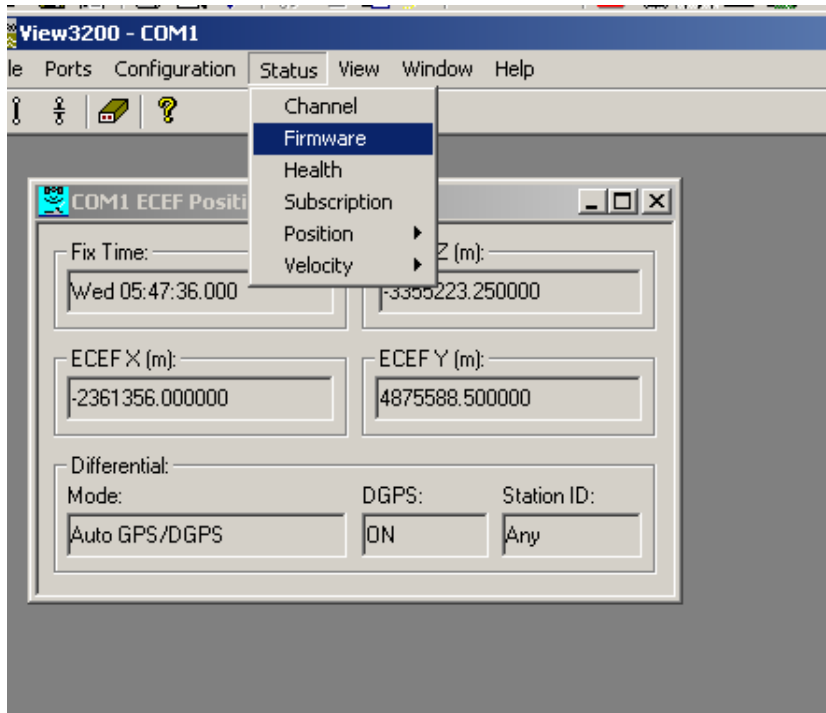


Once a position is displayed in the position window as shown below:



Select **STATUS**.

Then **FIRMWARE**.

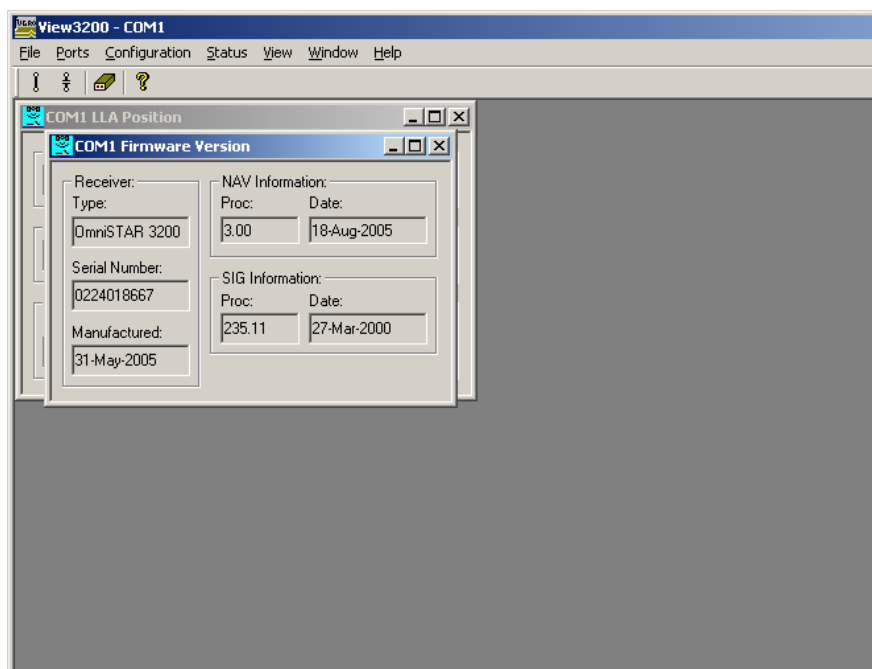


Note the firmware version.

Look in **NAV INFORMATION**.

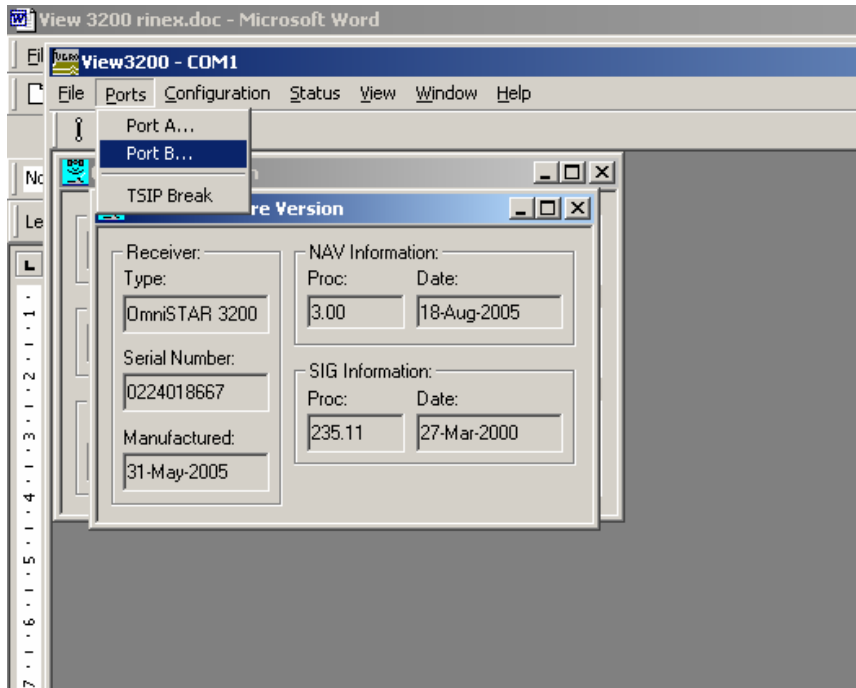
PROC: xxx.

PROC 3.00 is the minimum compatible firmware version.



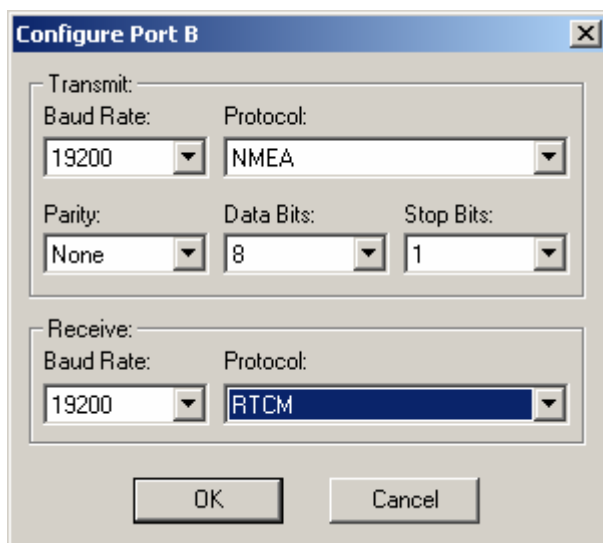
Select **PORTS**.

Then **PORT B**.



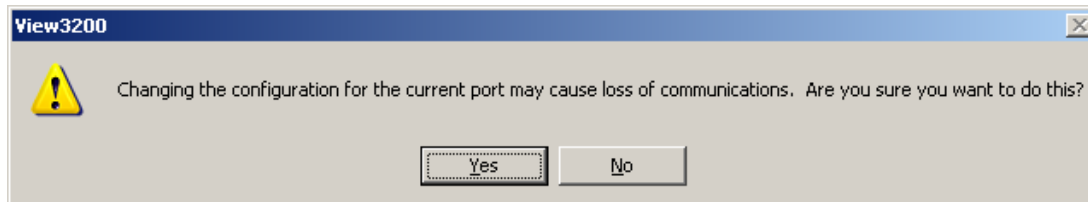
Set the Parameters as below.

Then **PRESS OK**.



The program will tell you that you risk a loss in communications with the receiver and ask if you really want to do that.

Click **YES**.



Restart the Rinex software and confirm all is functioning correctly.

Please contact OmniSTAR on 1300 794 498 if you have any problems between business hours.